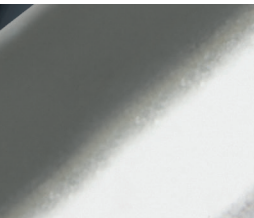
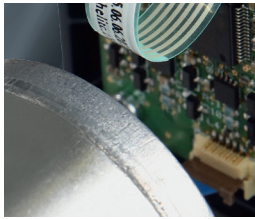
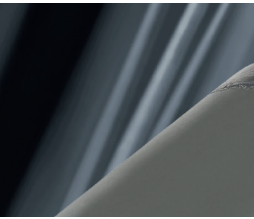
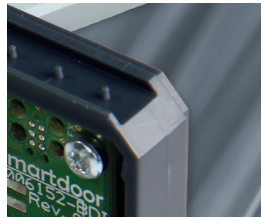
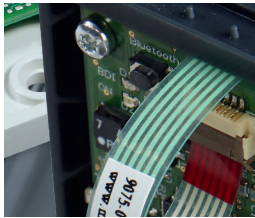
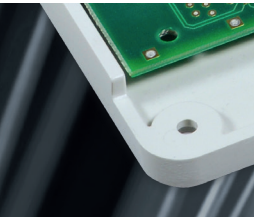
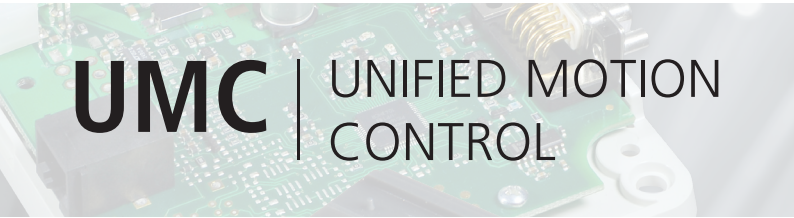
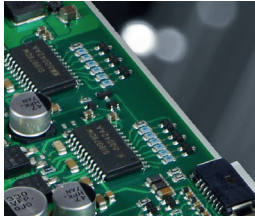
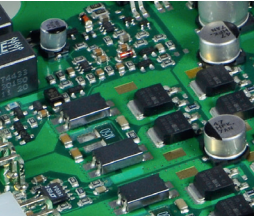
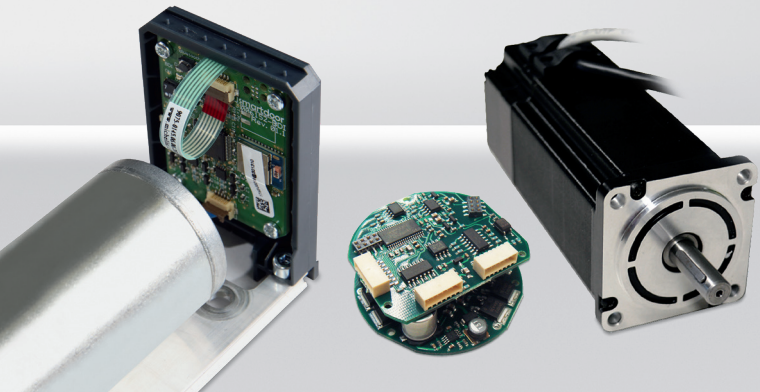


*moving forward*

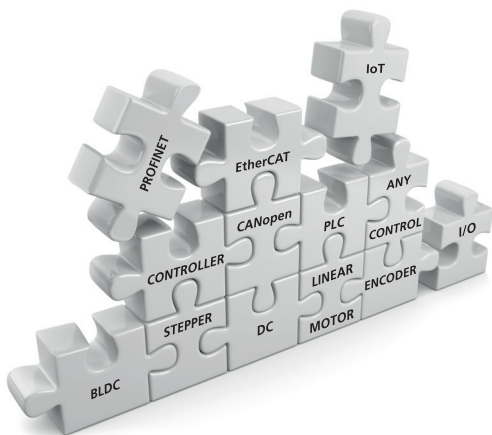
**antrimon**  
●●●● *group*





## UMC | UNIFIED MOTION CONTROL

The flexible structure of the Motion Control platform enables us to develop an individual solution tailored to your requirements in a very short time. You define the required specifications and we design your cost-optimised controller from our modular construction kit.



NETWORK



CLOUD



IOT



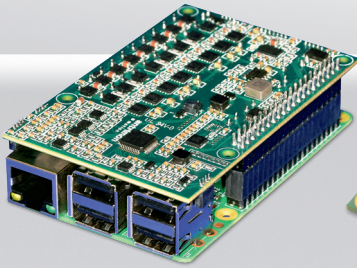
BIG DATA



INTEGRATION

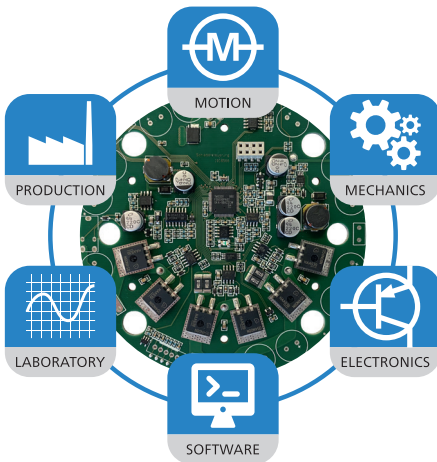
### Your advantages

- Cost reduction due to customer-specific solution
- Perfect adaptation to your own mechanics
- Get a competitive advantage in your branch of industry
- Increase innovation through fast market introduction



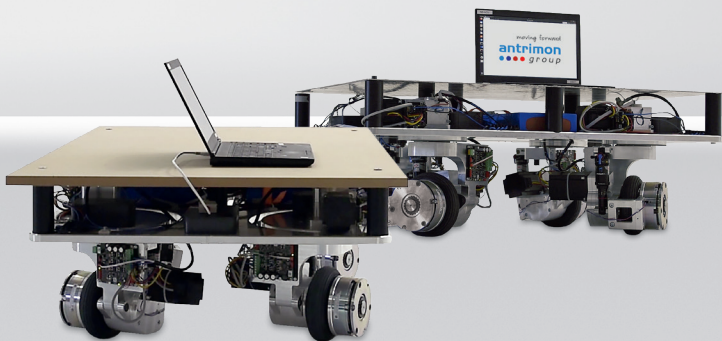
## SMARTDRIVE

Intelligent drive technology paves the way to digitalisation. Our experts develop smart controllers for efficient applications with high efficiency. Comprehensive analyses in our own drive technology test laboratory guarantees high quality.



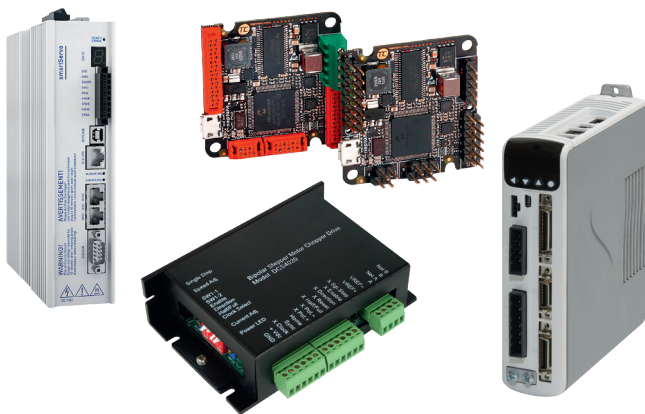
### Drive solution

- Solution-oriented control algorithms
- Various communication interfaces
- HMI, service and software commissioning
- Industry 4.0 | Simple integration



## FROM THE PROTOTYPE ...

Our large selection of standard motor controllers for the most diverse types of electric motors enables us to implement functional samples and prototypes of mechatronic systems within a very short time frame. Therefore, you get quick results and can influence the product development with agility.



FUNCTIONAL SAMPLE

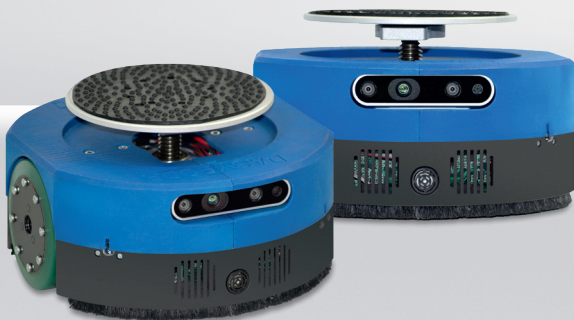
PROTOTYPE

PRE-SERIES

SERIES

### Standard drives

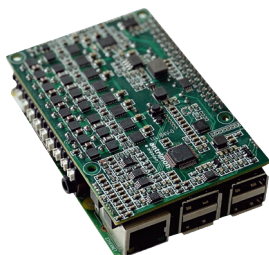
- Simple, fast configuration
- Particularly suitable for small and medium production runs
- Simple macro programming
- Perfect for sample, laboratory and test applications



## ... TO THE CUSTOMER-SPECIFIC SOLUTION

Based on the Unified Motion Control construction kit, we offer you applications and price-optimised drive solutions with our Smartdrive. Ideally suited for use in series products.

|                       |  |
|-----------------------|--|
| <b>Time-to-Market</b> | Rapid development thanks to modular system |
| <b>Individual</b>     | Needs-based and flexible solution          |
| <b>Versatile</b>      | Integration of various systems             |
| <b>IoT-ready</b>      | Equipped for the future                    |
| <b>Strong partner</b> | Many years of experience                   |
| <b>Local partner</b>  | Uncomplicated and near to you              |



FUNCTIONAL SAMPLE

PROTOTYPE

PRE-SERIES

SERIES

### Smartdrive

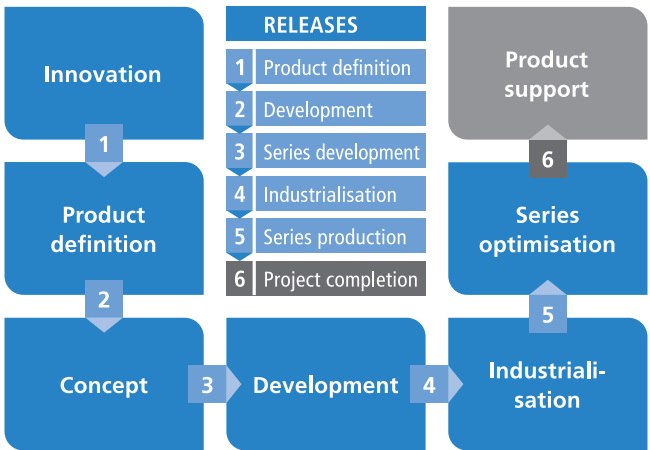
- Flexibly tailored to your needs
- Cost-optimised and ideal for large production runs
- In-house electronics manufacturing and unit assembly
- Manufacturer-independent thanks to ANTRIMON know-how





## PDP | PRODUCT DEVELOPMENT PROCESS

We successfully handle highly complex mechatronic system projects with the Product Development Process (PDP). It extends from the innovation idea to the start up of series production and integrates all relevant company-wide and area-wide parties in the creation of the product even before the start of the project. The PDP ensures comprehensive project control and high product quality by setting milestones and gates. Transparency and trust for the customer through involvement in the releases.



### Your advantages

- Short time-to-market
- High product quality
- Reliable partner
- High transparency



## STANDARD DRIVE COMPONENTS

The ANTRIMON Group AG has a wide global network of business partners that manufacture motors and drive components for us in the most diverse technologies in various production facilities all over the world. This enables us to tackle projects irrespective of the technology. The optimum solution for your application is paramount. We would be glad to assist you with the evaluation and design of your drive system.



### Components

- DC motors
- BLDC motors
- Stepper motors
- Servo motors
- AC motors
- Couplings | Guides
- Nuts | Spindles
- Standard motor controllers



**antrimon**  
● ● ● ● group

**Gotthard 3 –  
Competence in  
Mechatronics  
Muri | Aargau  
Switzerland**

**ISO**  
9001  
STANDARD

**ISO**  
13485  
MEDICAL

**We offer a comprehensive range of services**

in the field of mechatronics. We can support your project during every phase. We will be glad to offer our competent advice at any time. Your concerns are in the right place with us.

**ANTRIMON Group AG**

HQ: Gotthardstrasse 3 | 5630 Muri AG | Switzerland  
Tel. +41 58 330 26 00 | Fax +41 58 330 27 99  
info@antrimon.com | www.antrimon.com

BO: Industrieplatz 1c  
CH-8212 Neuhausen am Rheinfall  
Tel. +41 58 330 27 00

BO: Route des Avouillons 4  
CH-1196 Gland  
Tel. +41 58 330 26 50

**ANTRIMON Deutschland GmbH**

Heerstraße 26 | DE-78554 Aldingen | Germany  
Tel. +49 7424 9 48 00-0 | Fax +49 7424 9 48 00-199  
adgmbh-admin@antrimon.com | www.antrimon.de